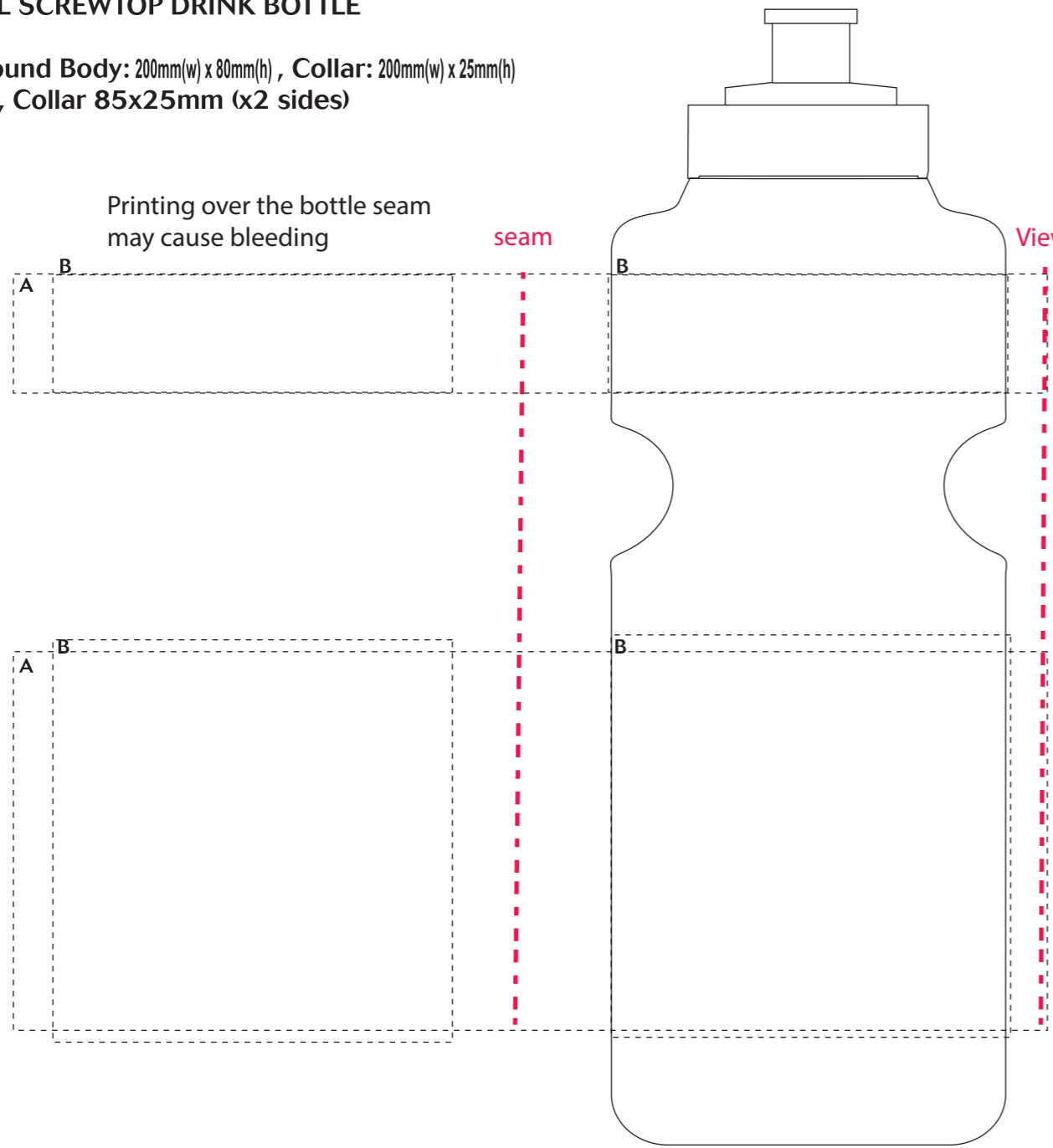


PRODUCT: **750ML SCREWTOP DRINK BOTTLE**
SHOWN AT: **75%**
PRINT AREA(S): **A: Wraparound Body: 200mm(w) x 80mm(h)** , **Collar: 200mm(w) x 25mm(h)**
B: Normal Body: 80 x 85mm, Collar 85x25mm (x2 sides)
PRINT TYPE: **SCREEN**
COMMENTS:

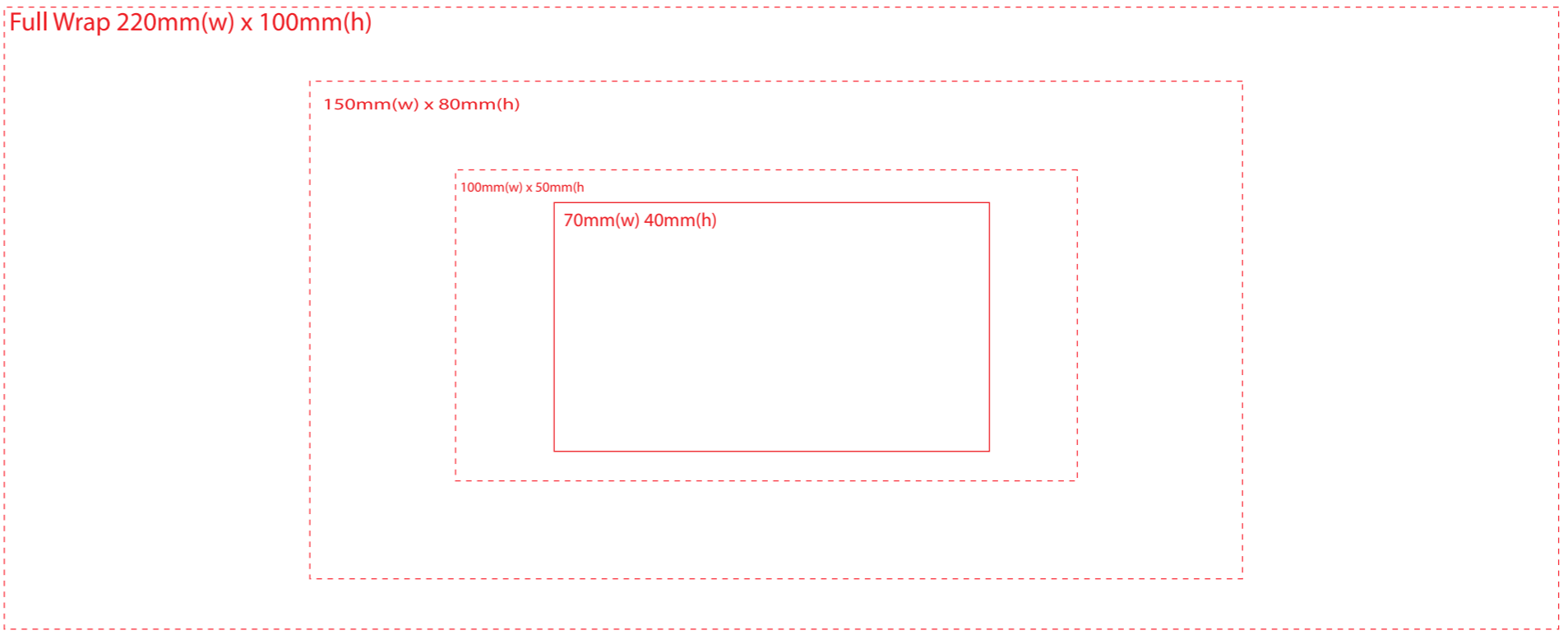


Printing over the bottle seam
may cause bleeding

Viewstrip/Seam

bottles without viewing strip will
have seam instead

DIGITAL PRINT SIZE
70mm(w) x 40mm(h)
100mm(w) x 50mm(h)
150mm(w) x 80mm(h)
Full Wrap 220mm(w) x 100mm(h)



N.B. THESE DRAWINGS ARE PROVIDED TO SHOW THE POSITION & SIZE OF PRINT ON THE PRODUCT - PLEASE TREAT DRAWINGS AS REPRESENTATIVE ONLY. IF IN DOUBT, PLEASE ASK FOR A SAMPLE OR IMAGE